

# Intelijet TS UNO PLUS 3.1

All-In-One, 4 Head, Print Solution

## High Resolution Printing

Proven And Dependable Performance

The **Intelijet TS UNO PLUS 3.1**™ all-in-one Print Head and Touch Screen User Interface gives you a simple, yet incredibly powerful way to print using up to 4 1/2" (12.7mm) printheads with minimal effort. The system allows you to be up and running within minutes.

Using **BELL-MARK**'s proven and highly reliable print solutions based on HP technology, the **Intelijet TS UNO PLUS 3.1**™ is the ideal product for serialization, barcodes and human readable printing.

- No mess, no maintenance HP and **BELL-MARK** technology
- Rugged industrial design for the most demanding installations
- Variable and fixed data capability
- SQL Database connectivity
- Onboard job creation
- Networkable - can be connected to company network



## All NEW User Interface

- 10.4" (264mm) Touch-screen with built in label creation software and updated user interface.
- Controls up to 4 print heads.
- Multiple customized password levels.
- Individual pen ink level monitoring and diagnostics.
- Internet enabled network support and software update.
- Full (VDP) Variable Data Printing Capable.
- PC control system with solid state drive.
- Ethernet, RS232, or discrete I/O to connect to packaging line.
- Full data logging support.



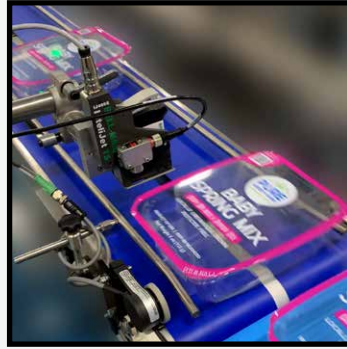
# BELL-MARK



# InteliJet TS UNO+ Applications



Mounted on a Continuous Motion Flow Wrapper



Mounted to Tray Sealer



Cardboard box conveyor line



Printing on plastic bottles

## All Inclusive Solutions

### For Your Peace Of Mind

The **InteliJet TS uno PLUS** heads are manufactured from an aluminum casing with an all-metal design for maximum durability. With an industrial touch screen for its user interface, it will stand up well in any environment.



The **InteliJet TS uno PLUS** has connections for encoders and sensor, as well as an Ethernet port for connecting to external data sources and networks.

### External Connectivity includes:

- External I/O
- Serial port (RS 232)
- USB
- Ethernet
- Signal light output

### Additional equipment that connects directly to the TS UNO includes:

- Sensor
- Encoder
- Fixed pen mounting kit
- Hand-held barcode scanner for message selection
- Bulk ink regulator and ink holder with empty detect

## Inks

### Options To Suit Every Need

Whether printing on matte stocks or glossy finishes, **BELL-MARK** provides inks that dry quickly, are water-resistant, and adhere to the most difficult substances. From paper to plastic, **BELL-MARK** has the ink solution for you.

### Print Samples on Black

**Bell-Mark Intelijet TS Thermal Inkjet Printer**  
 Use or Freeze By: 07/18/2022 Lot: 12345 973-882-0202 www.bell-mark.com

**Bell-Mark Intelijet TS Thermal Inkjet Printer**  
 Use or Freeze By: 07/18/2022 Lot: 12345 973-882-0202 www.bell-mark.com

### Print Samples on White

**Bell-Mark Intelijet TS Thermal Inkjet Printer**  
 973-882-0202 www.bell-mark.com USE or Freeze BY: 12-25-2022

**Bell-Mark Intelijet TS Thermal Inkjet Printer**  
 973-882-0202 www.bell-mark.com USE or Freeze BY: 12-25-2022

**Bell-Mark Intelijet TS Thermal Inkjet Printer**  
 973-882-0202 www.bell-mark.com USE or Freeze BY: 12-25-2022

**Bell-Mark Intelijet TS Thermal Inkjet Printer**  
 973-882-0202 www.bell-mark.com USE or Freeze BY: 12-25-2022

## Sophisticated Control

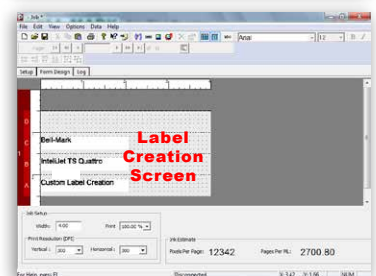
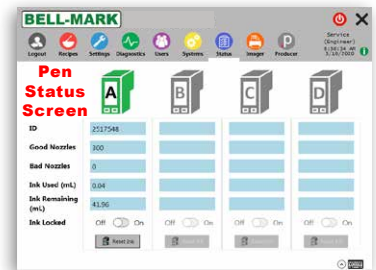
### Advanced Design And Management Software

The touch-screen interface allows the user to monitor various operating conditions, including job types and counts and even ink usage, all in real-time.

Built-in label creation software permits the creation and preview of print templates, including:

- All twenty-four Windows Unicode languages
- Dynamic and fixed text
- Dynamic and fixed bitmaps
- Time/Date Stamp - fixed or real-time
- Barcodes including 2D GS1 Data Matrix
- Barcode Width Reduction feature for printing high quality barcodes on porous substrates.

The **InteliJet TS uno PLUS** also has remote support capabilities through TeamViewer, only requiring an internet connection.



**SUNRISE 2027 COMPLIANT**



Use/Freeze by: 02/12/2027  
 EST 1123A 4 15:08

**Scan to learn more about Sunrise 2027**